

ARMANDO CABRAL

HEIGHT: 6' 2" / 188 CM CHEST: 40" / 102 CM WAIST: 31" / 81 CM SHOES: 10 US / 43 EU HAIR: BLACK / NEGRO EYES: BROWN / MARRONES



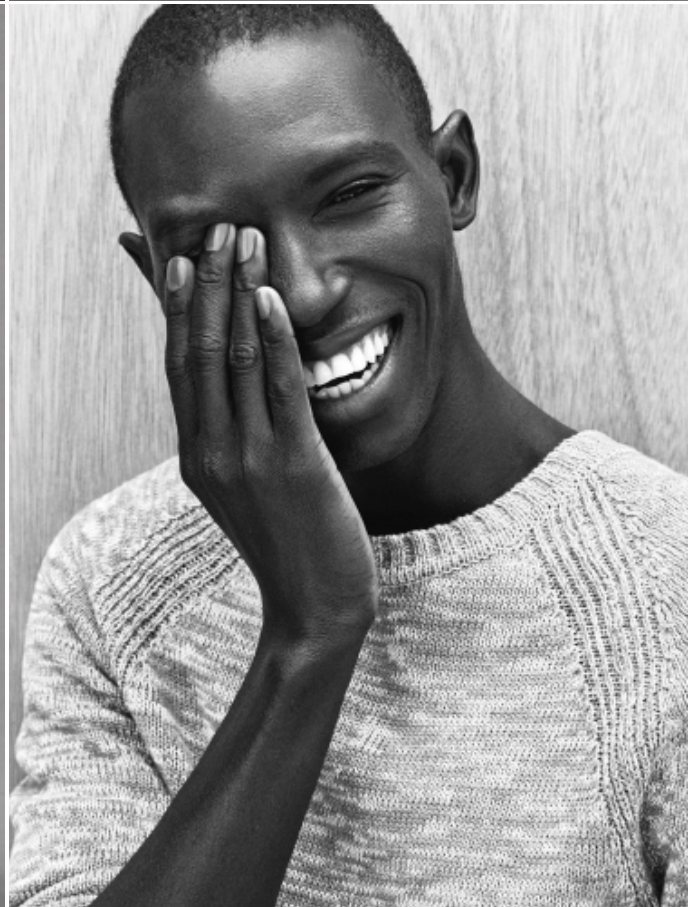
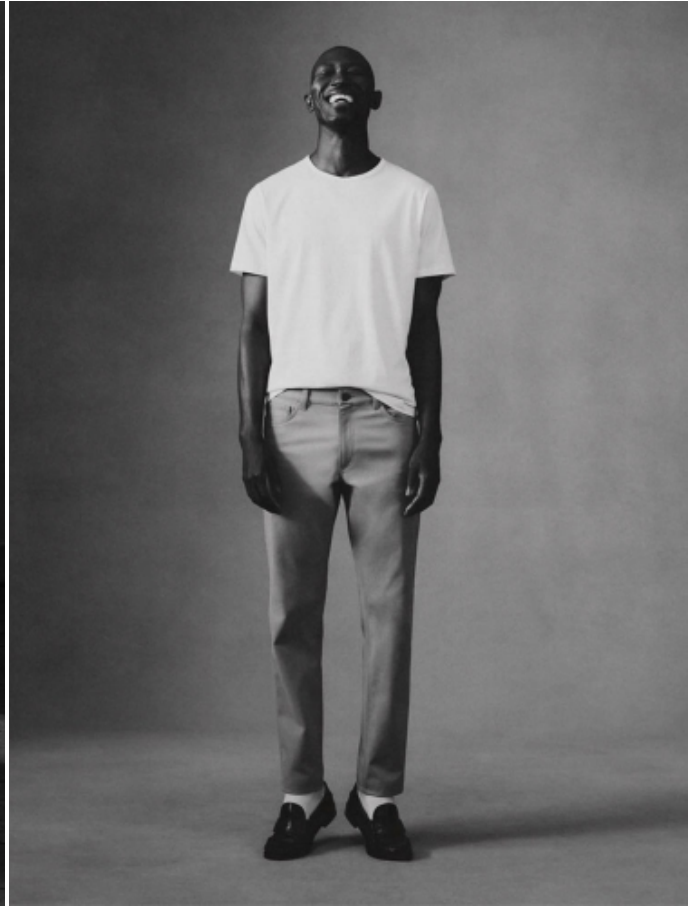
ARMANDO CABRAL

HEIGHT: 6' 2" / 188 CM CHEST: 40" / 102 CM WAIST: 31" / 81 CM SHOES: 10 US / 43 EU HAIR: BLACK / NEGRO EYES: BROWN / MARRONES



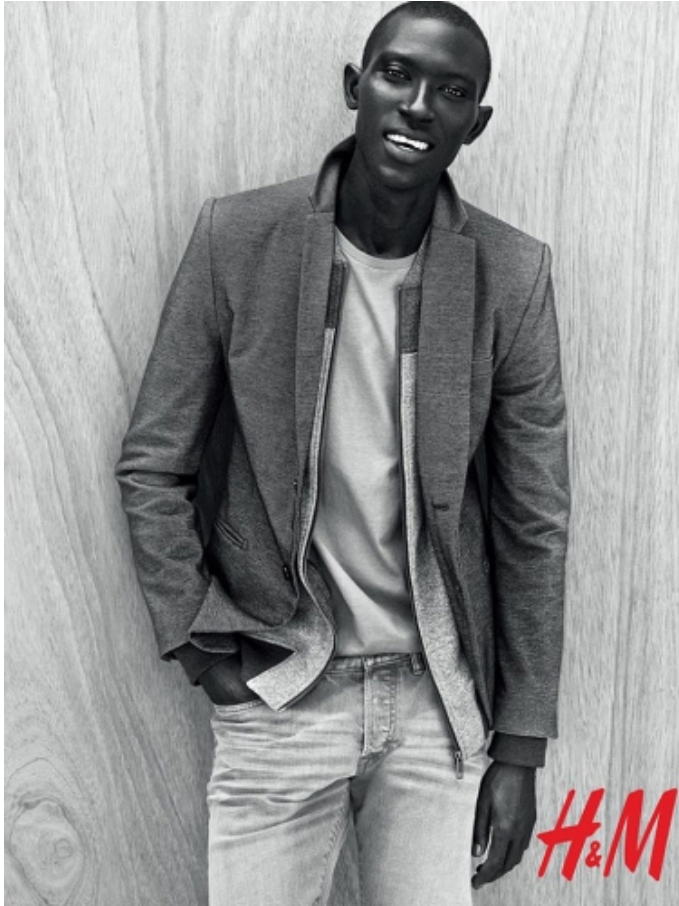
ARMANDO CABRAL

HEIGHT: 6' 2" / 188 CM CHEST: 40" / 102 CM WAIST: 31" / 81 CM SHOES: 10 US / 43 EU HAIR: BLACK / NEGRO EYES: BROWN / MARRONES



ARMANDO CABRAL

HEIGHT: 6' 2" / 188 CM CHEST: 40" / 102 CM WAIST: 31" / 81 CM SHOES: 10 US / 43 EU HAIR: BLACK / NEGRO EYES: BROWN / MARRONES



BURBERRY PRORSUM

Cashmere wool topcoat (\$2,585), cashmere sweater (\$675) and wool cashmere trousers (\$675) by Burberry Prorsum.

Stylist's Assistants:
Man: George & Vito Lora
Grooming by L'E Olivier

ARMANDO CABRAL

HEIGHT: 6' 2" / 188 CM CHEST: 40" / 102 CM WAIST: 31" / 81 CM SHOES: 10 US / 43 EU HAIR: BLACK / NEGRO EYES: BROWN / MARRONES



126 SHARPMAGAZINE.COM / SEPTEMBER 2014



ARMANDO CABRAL

HEIGHT: 6' 2" / 188 CM CHEST: 40" / 102 CM WAIST: 31" / 81 CM SHOES: 10 US / 43 EU HAIR: BLACK / NEGRO EYES: BROWN / MARRONES

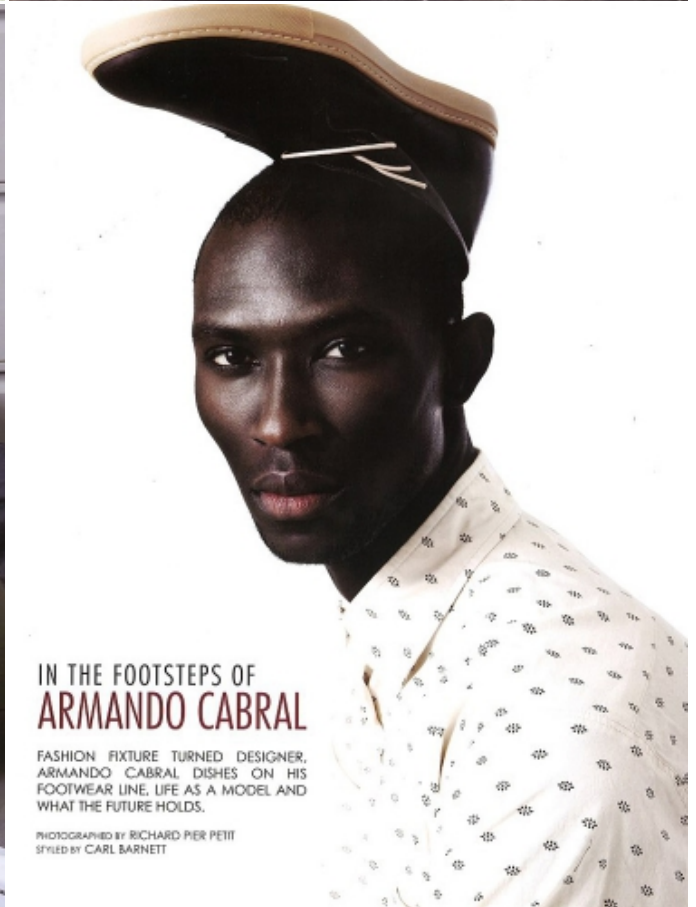
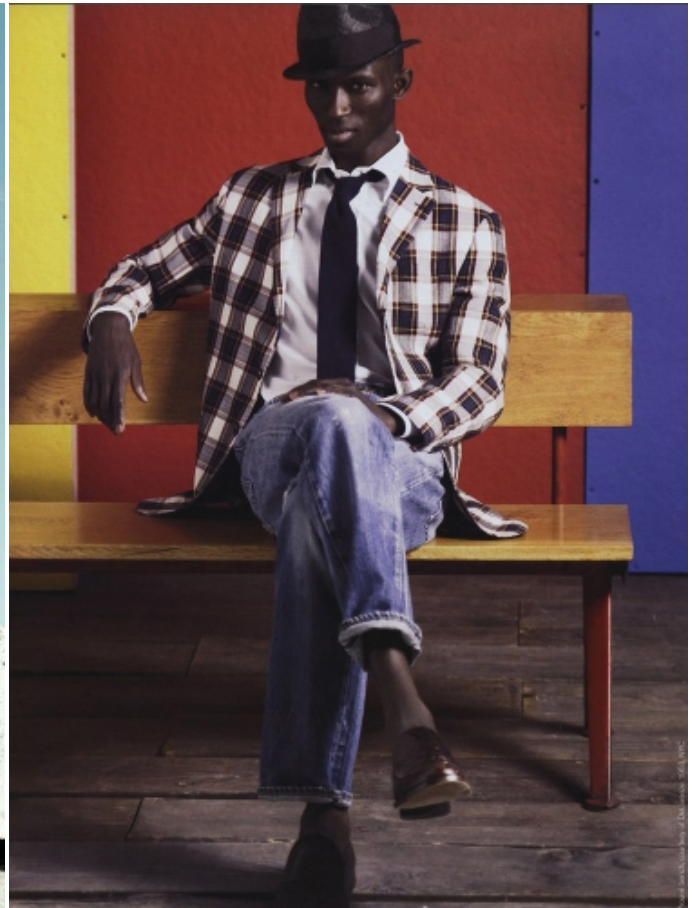


134 SHARP MAGAZINE.COM / SEPTEMBER 2011



ARMANDO CABRAL

HEIGHT: 6' 2" / 188 CM CHEST: 40" / 102 CM WAIST: 31" / 81 CM SHOES: 10 US / 43 EU HAIR: BLACK / NEGRO EYES: BROWN / MARRONES



IN THE FOOTSTEPS OF ARMANDO CABRAL

FASHION FIXTURE TURNED DESIGNER, ARMANDO CABRAL DISHES ON HIS FOOTWEAR LINE, LIFE AS A MODEL AND WHAT THE FUTURE HOLDS.

PHOTOGRAPHED BY RICHARD PIER PETIT
STYLED BY CARL BARNETT

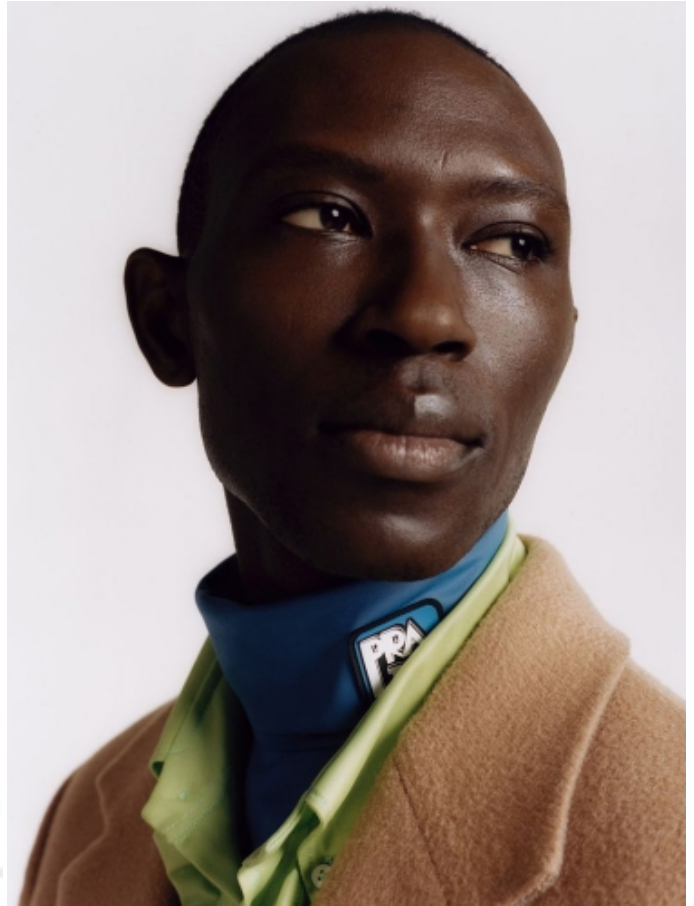
ARMANDO CABRAL

HEIGHT: 6' 2" / 188 CM CHEST: 40" / 102 CM WAIST: 31" / 81 CM SHOES: 10 US / 43 EU HAIR: BLACK / NEGRO EYES: BROWN / MARRONES



FINE PROPORTION
A smooth, knitted turtleneck adds to the sophisticated touch to today's street fashion. Armande wears one such, designed by Alan and Steve Armande Cabral.

Opposite Page Armande wears a turtleneck by Alan and Steve Armande Cabral.



WWW.SIGHT-MANAGEMENT.COM P° DE GRACIA 37 PH +34 932 722 434