

HUGH BURRY

HEIGHT: 6' 2" / 189 CM CHEST: 37" / 96 CM WAIST: 31" / 81 CM SHOES: 11 US / 44 EU HAIR: BROWN / CASTAÑO EYES: BLUE / AZULES



HUGH BURRY

HEIGHT: 6' 2" / 189 CM CHEST: 37" / 96 CM WAIST: 31" / 81 CM SHOES: 11 US / 44 EU HAIR: BROWN / CASTAÑO EYES: BLUE / AZULES



Ting Shi wears Hushie
 white turtleneck shirt from
 by SPORREMAX, blazer
 jacket from by JW
 ANDERSON, trousers from
 by PANTHELLA, London.
 Scarf from by GILBERTO
 ZANOTTI, black turtleneck
 from by SALVATORE FERRAGAMO,
 shoes by LOUWE, 1980.
 Handmade by PANTHELLA, Ltd.
 London, photo by TOMMY



George D'Amico wears Superstar
 jacket by WOOLRICH,
 turtleneck from by
 GIANNI VERSACE, turtleneck
 sweater from by WILLIAM
 VINCE, black turtleneck
 shirt by LOUWE, dark
 hat by DIOR, ring necklace by
 ALEXANDER MCQUEEN, white
 socks from by PANTHELLA.
 Jacket from up photo by
 GEORGIO ARMANI. Ring
 from from from from from
 by WOOLRICH, turtleneck
 and turtleneck shirt by GILBERTO
 ZANOTTI, turtleneck sweater from
 from WILLIAM VINCE.
 Scarf from from from by JW
 ANDERSON, white turtleneck
 by PANTHELLA, turtleneck shirt
 by BIESS, mixed pearl necklace
 by PRADA.

HUGO BOSS TURTLENECK
 MICHAEL KORS BIESS
 WILLIAM VINCE
 GILBERTO ZANOTTI
 J.W. ANDERSON
 GIANNI VERSACE
 PANTHELLA
 WOOLRICH
 ALEXANDER MCQUEEN
 DIOR
 LOUWE
 SPORREMAX
 SALVATORE FERRAGAMO
 TOMMY HILF



Hugh Burry wears white turtleneck
 polo shirt by AZZEDINE
 AGLAI, blazer from
 by LACOSTE, light-colored
 turtleneck from from
 by DIOR, glasses from
 by OLIVER PEOPLES.
 Jacket hat by TOM FORD.
 Camera from from
 turtleneck from from
 jacket by LOUWE, white
 turtleneck shirt from
 by JOHN SMEDLEY, shoes
 from JOHN CRAWFORD
 LONDON, turtleneck from
 by OLIVER PEOPLES.

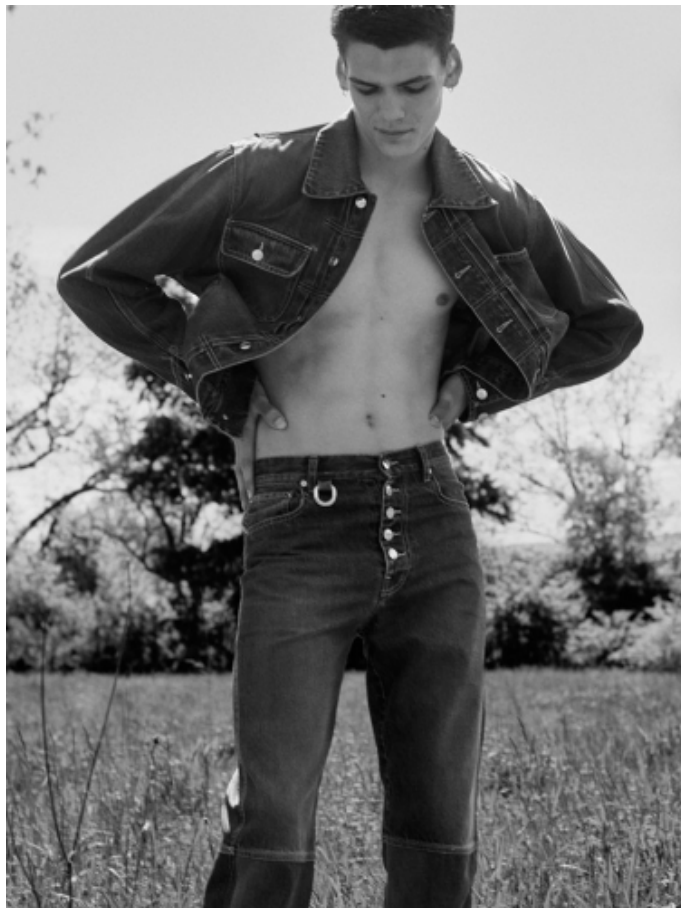


LEATHER BY TOMMY HILF

Photography: Hugh Burry at 1011 Market
 Street & 14th St by Tom De Haven and Tom De Haven
 Photo: Tom De Haven
 Styling: Tom De Haven
 Hair: Tom De Haven
 Makeup: Tom De Haven

HUGH BURRY

HEIGHT: 6' 2" / 189 CM CHEST: 37" / 96 CM WAIST: 31" / 81 CM SHOES: 11 US / 44 EU HAIR: BROWN / CASTAÑO EYES: BLUE / AZULES



HUGH BURRY

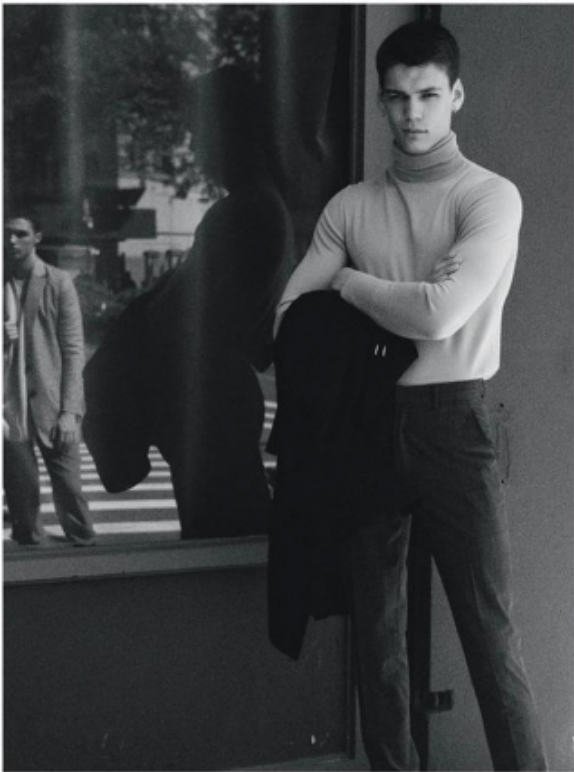
HEIGHT: 6' 2" / 189 CM CHEST: 37" / 96 CM WAIST: 31" / 81 CM SHOES: 11 US / 44 EU HAIR: BROWN / CASTAÑO EYES: BLUE / AZULES



On-site hair and makeup:
Curtain panels, shirt, and patterned
Curtain leggings, silver trousers,
shoes, and patterned leather
boots. Design: [unreadable]

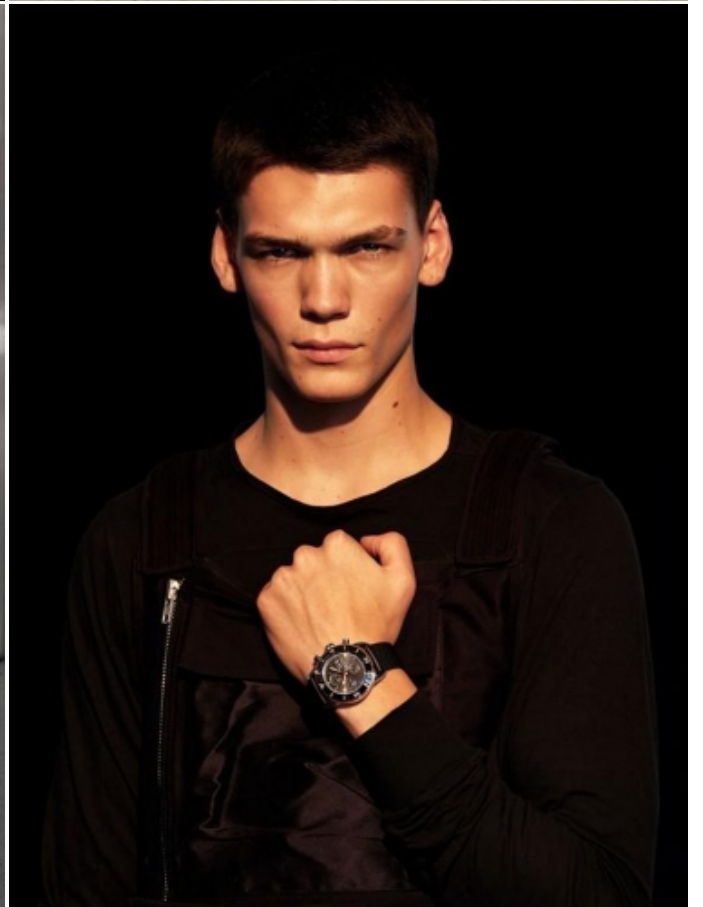
On-site hair and makeup:
Curtain panels, shirt, and
Curtain leggings. Design: [unreadable]

Hair and Grooming: [unreadable]
Production: [unreadable] [unreadable]
and [unreadable] 2014



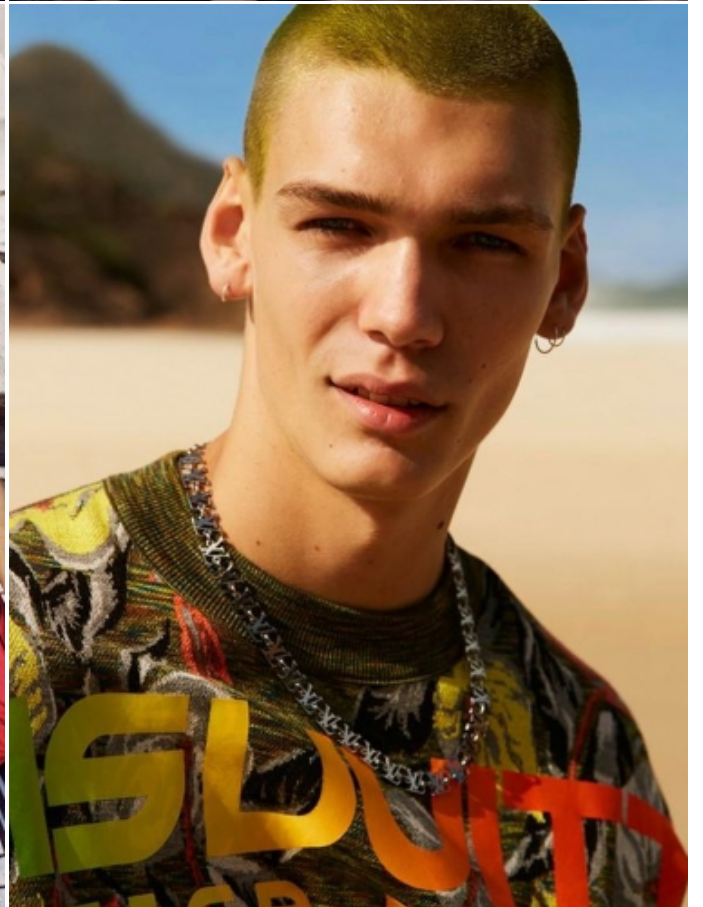
HUGH BURRY

HEIGHT: 6' 2" / 189 CM CHEST: 37" / 96 CM WAIST: 31" / 81 CM SHOES: 11 US / 44 EU HAIR: BROWN / CASTAÑO EYES: BLUE / AZULES



HUGH BURRY

HEIGHT: 6' 2" / 189 CM CHEST: 37" / 96 CM WAIST: 31" / 81 CM SHOES: 11 US / 44 EU HAIR: BROWN / CASTAÑO EYES: BLUE / AZULES



HUGH BURRY

HEIGHT: 6' 2" / 189 CM CHEST: 37" / 96 CM WAIST: 31" / 81 CM SHOES: 11 US / 44 EU HAIR: BROWN / CASTAÑO EYES: BLUE / AZULES



WWW.SIGHT-MANAGEMENT.COM P° DE GRACIA 37 PH +34 932 722 434