

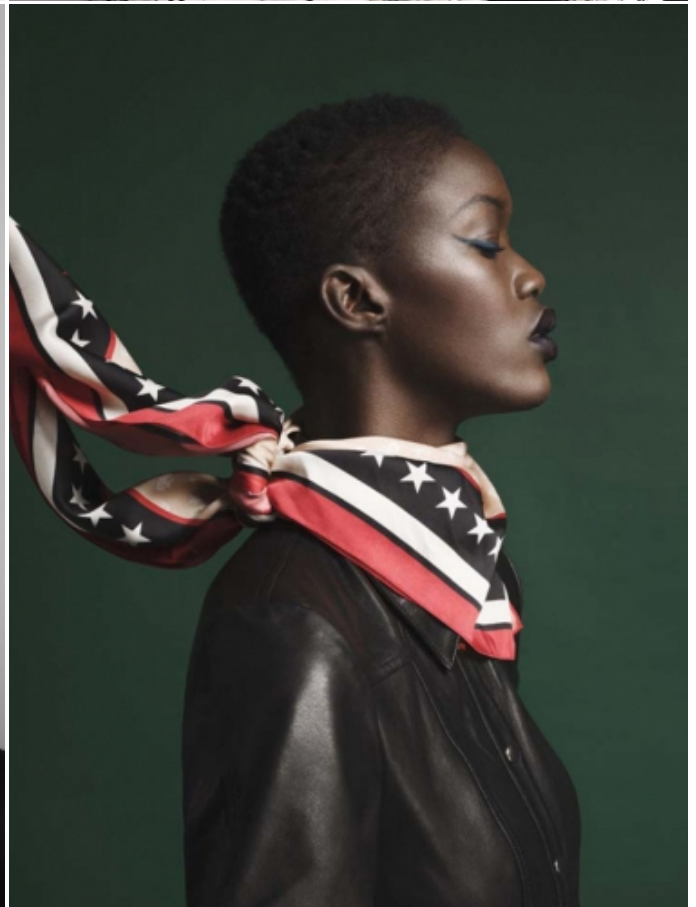
ADAMA JOBE

HEIGHT: 5'12" / 182 CM BUST: 31" / 81 CM WAIST: 24" / 63 CM HIPS: 35" / 91 CM SHOES: 10.5 US / 41 EU HAIR: BLACK / NEGRO EYES: BROWN / MARRONES



ADAMA JOBE

HEIGHT: 5'12" / 182 CM BUST: 31" / 81 CM WAIST: 24" / 63 CM HIPS: 35" / 91 CM SHOES: 10.5 US / 41 EU HAIR: BLACK / NEGRO EYES: BROWN / MARRONES



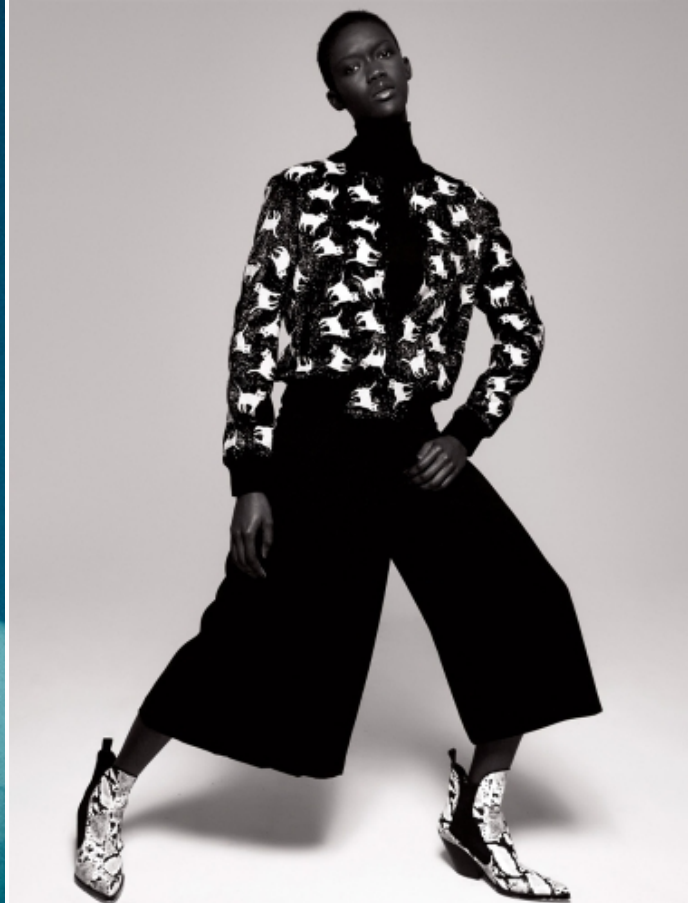
ADAMA JOBE

HEIGHT: 5'12" / 182 CM BUST: 31" / 81 CM WAIST: 24" / 63 CM HIPS: 35" / 91 CM SHOES: 10.5 US / 41 EU HAIR: BLACK / NEGRO EYES: BROWN / MARRONES



ADAMA JOBE

HEIGHT: 5'12" / 182 CM BUST: 31" / 81 CM WAIST: 24" / 63 CM HIPS: 35" / 91 CM SHOES: 10.5 US / 41 EU HAIR: BLACK / NEGRO EYES: BROWN / MARRONES



ADAMA JOBE

HEIGHT: 5'12" / 182 CM BUST: 31" / 81 CM WAIST: 24" / 63 CM HIPS: 35" / 91 CM SHOES: 10.5 US / 41 EU HAIR: BLACK / NEGRO EYES: BROWN / MARRONES



LINKE SEITE: Collar „Pave G20k“ aus Gelbgold mit Brillant W. von WELLENBERG. Pa. A. Mini-Mini aus Viskose Strick, von TONS, um 1100 €. DIESE SEITE: Mantelkettenschnitt „Coco G20k“ aus Gelbgold, von CHANEL. Pa. A. V-Neck Pullover aus Scherwolle und Cashmere, von DREIER, um 500 €. Hier: aus Dvino-Latino Mix, von LAPPALO BILBAO, um 450 €. Mod. © Adama Jobe / Modelwerk. Make-up: Kristina Kolosov / Land and House. Philip Fuchs / Lindendieb. Stylingassistenz: Tinka Volzin Knoll. Produktion: DAF Stockholm

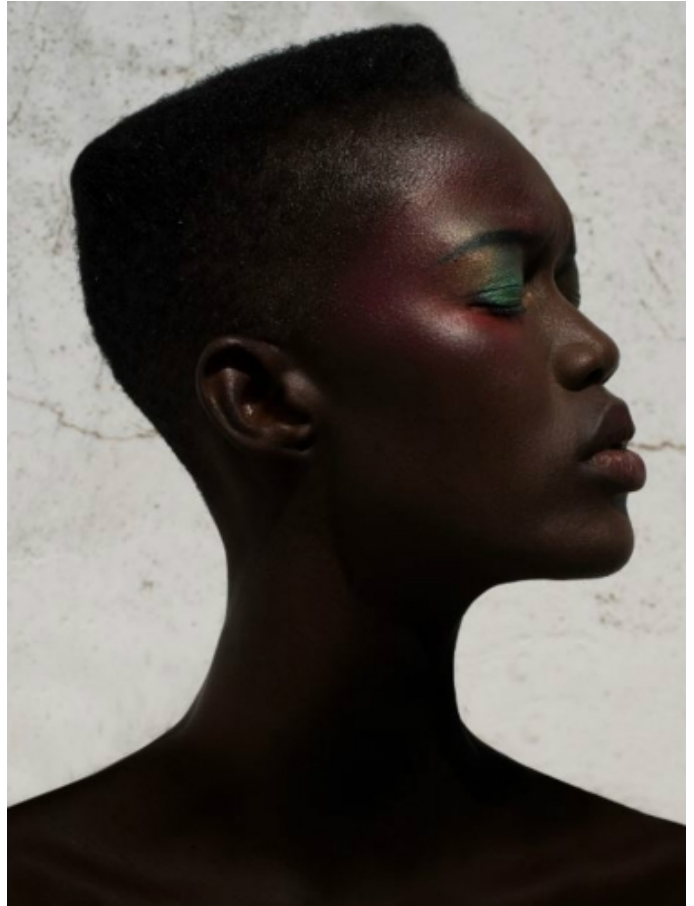
ADAMA JOBE

HEIGHT: 5'12" / 182 CM BUST: 31" / 81 CM WAIST: 24" / 63 CM HIPS: 35" / 91 CM SHOES: 10.5 US / 41 EU HAIR: BLACK / NEGRO EYES: BROWN / MARRONES



128

ELLE 1. Juni 2012



ADAMA JOBE

HEIGHT: 5'12" / 182 CM BUST: 31" / 81 CM WAIST: 24" / 63 CM HIPS: 35" / 91 CM SHOES: 10.5 US / 41 EU HAIR: BLACK / NEGRO EYES: BROWN / MARRONES



ADAMA JOBE

HEIGHT: 5'12" / 182 CM BUST: 31" / 81 CM WAIST: 24" / 63 CM HIPS: 35" / 91 CM SHOES: 10.5 US / 41 EU HAIR: BLACK / NEGRO EYES: BROWN / MARRONES



WWW.SIGHT-MANAGEMENT.COM P° DE GRACIA 37 PH +34 932 722 434