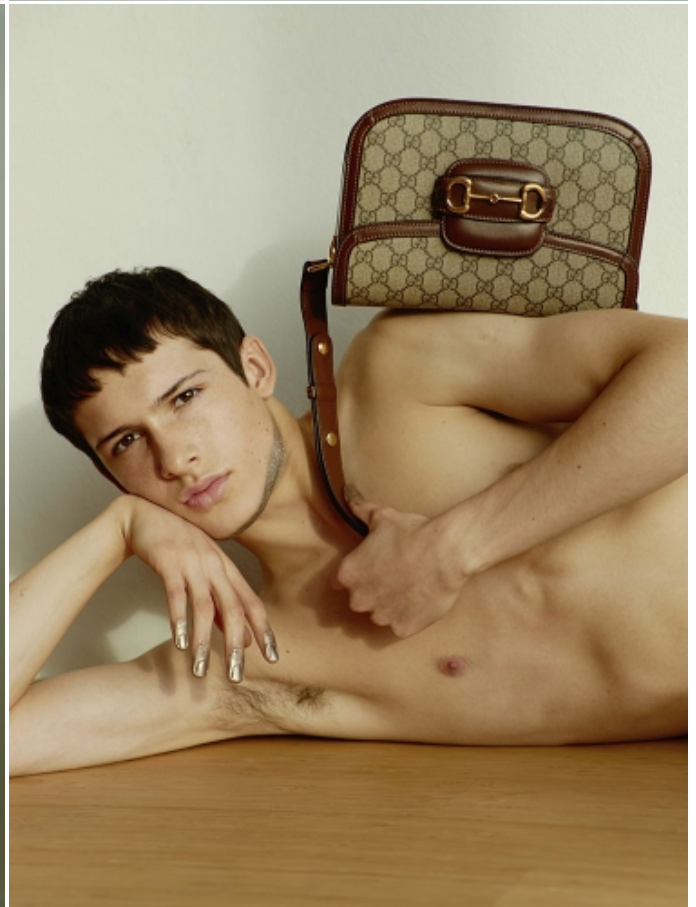


MATEO RUIZ

HEIGHT: 6'2" / 187 CM CHEST: 35" / 89 CM WAIST: 29" / 76 CM HIPS: 36" / 92 CM SHOES: 12 US / 45 EU HAIR: DARK BROWN / CASTAÑO OSCURO EYES: BROWN / MARRÓN



MATEO RUIZ

HEIGHT: 6'2" / 187 CM CHEST: 35" / 89 CM WAIST: 29" / 76 CM HIPS: 36" / 92 CM SHOES: 12 US / 45 EU HAIR: DARK BROWN / CASTAÑO OSCURO EYES: BROWN / MARRONES



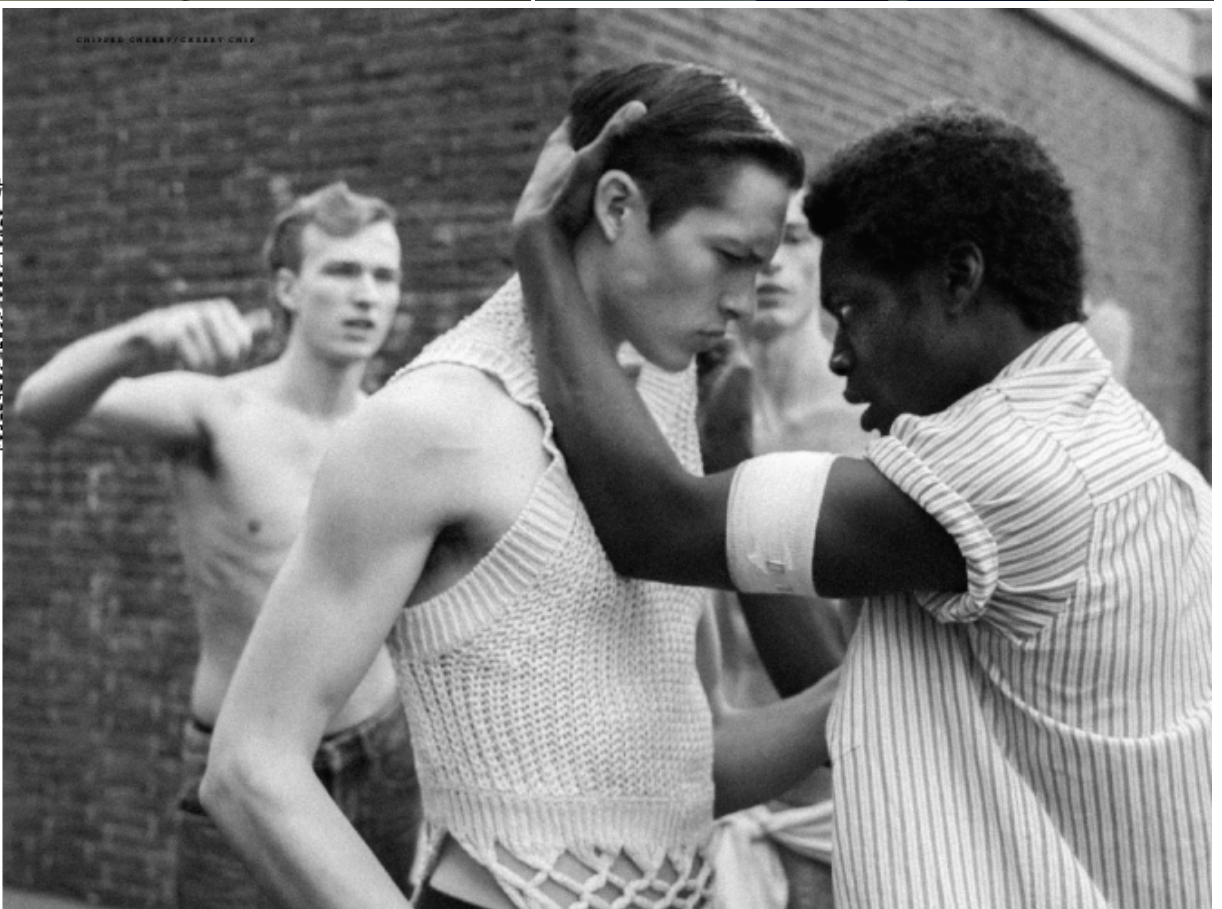
118

CRIPPER GREASY / GREASY CRIP

PHOTOGRAPHY
+ FASHION SINO GURNERI

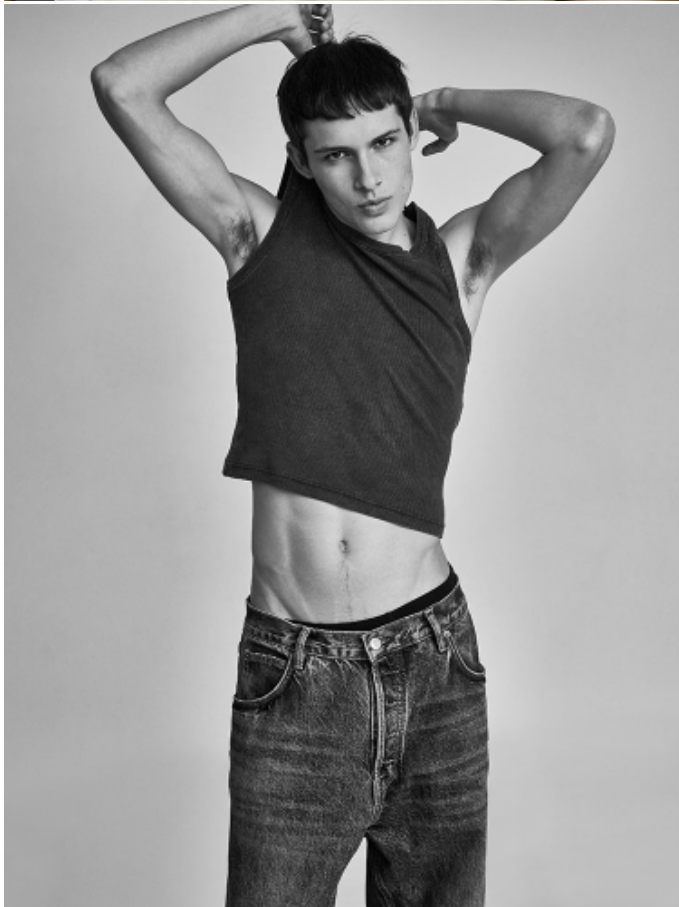
ISABEL MARANT

Boys become
men - faded
Marcel
1984 was
a coming-
of-age tale.
The grunge
kids became
city slickers
- but in that
low-key,
downbeat
way - trackies
are paired
with soft
blazers,
unders
tanks over
sweat-
jeans, and
hand-woven
boots are
pimpmy punk.



MATEO RUIZ

HEIGHT: 6'2" / 187 CM CHEST: 35" / 89 CM WAIST: 29" / 76 CM HIPS: 36" / 92 CM SHOES: 12 US / 45 EU HAIR: DARK BROWN / CASTAÑO OSCURO EYES: BROWN / MARRÓN



MATEO RUIZ

HEIGHT: 6'2" / 187 CM CHEST: 35" / 89 CM WAIST: 29" / 76 CM HIPS: 36" / 92 CM SHOES: 12 US / 45 EU HAIR: DARK BROWN / CASTAÑO OSCURO EYES: BROWN / MARRONES



MATEO RUIZ

HEIGHT: 6'2" / 187 CM CHEST: 35" / 89 CM WAIST: 29" / 76 CM HIPS: 36" / 92 CM SHOES: 12 US / 45 EU HAIR: DARK BROWN / CASTAÑO OSCURO EYES: BROWN / MARRONES

